

**Erprobt.  
Bewährt.  
Verbessert.**

# **Comeback der legendären Investitionsförderung für gebrauchte Landtechnik**

**Das Lagerhaus Technik-Center unterstützt  
unsere Landwirte in anspruchsvollen Zeiten  
mit tollen Förderaktionen.**

**Aktionszeitraum:  
Samstag 01.11. – Mittwoch 31.12.25**



## **Fördervoraussetzung:**

- gebrauchte Landtechnik
- Zeitraum der Förderung:  
**Samstag 01.11. – Mittwoch 31.12.25**
- Zahlung vor Abholung
- Finanzierung für ausgewählte Maschinen möglich
- Abholung bis 31.12.2025
- wie besichtigt und Probe gefahren
- die Förderung wird direkt beim Kaufpreis abgezogen

## **Fördergegenstand:**

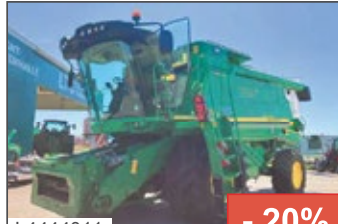
- Traktoren und Mähdrescher: 20 %
- Teleskoplader: 20 %
- Bodenbearbeitung: 25 %
- Sätechnik und Pflege Technik: 25 %
- Grünland: 25 %
- Düngung/Transport/Forst: 30 %





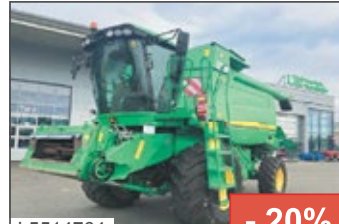
L6367783 - 20%

John Deere - S 780, 2024, 480/353 PS/kW, 166h, **EUR 469.900,- exkl.** 20 % MwSt. (statt 587.375,-), Ableidinger Martin, +43664 6271149, (ID 68384112)



L4444011 - 20%

John Deere - T550 HM, 2014, 305/225 PS/kW, 1300h, **EUR 124.900,- exkl.** 20 % MwSt. (statt 156.125,-), Stahl Friedrich, +43664 6273322, (ID G 68385055)



L5514764 - 20%

John Deere - T560HM, 2009, 350/258 PS/kW, 2852h, **EUR 89.900,- exkl.** 20 % MwSt. (statt 112.375,-), Stahl Friedrich, +43664 6273322, (ID G 68388188)



L4402294 - 20%

Claas - Lexion 370, 2006, 260/192 PS/kW, 120h, **EUR 65.900,- exkl.** 20 % MwSt. (statt 82.375,-), Kurzreiter Peter, +43664 6272587, (ID G 68386603 + 6838660)



L5667815 - 20%

John Deere - 6250R, 2020, 250/184 PS/kW, 3500h, A, K, DLB, FH, gFVA, KL, KRG, EHR, **EUR 144.900,- exkl.** 20 % MwSt. (statt 181.125,-), Simon Mario, +43664 5314645, (ID G 68387614 - SI56423)



L5877120 - 20%

John Deere - 6155R, 2018, 155/114 PS/kW, 169h, A, K, DLB, FH, gFVA, KL, KRG, EHR, **EUR 94.900,- exkl.** 20 % MwSt. (statt 118.625,-), Barat Tibor, +43664 88839569, (ID V 68386027)



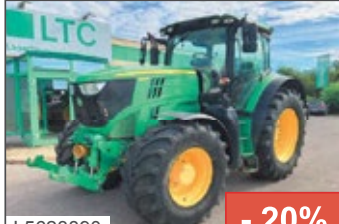
L6006682 - 20%

John Deere - 6210R, 2015, 210/155 PS/kW, 9210h, A, LS, K, DLB, FH, gFVA, KL, EHR, **EUR 55.900,- exkl.** 20 % MwSt. (statt 69.875,-), Kurzreiter Erich, +43664 6272782, (ID G 68386837 - 1591109)



L5624043 - 20%

John Deere - 6125R, 2014, 125/92 PS/kW, 4435h, A, K, DLB, FH, FZW, gFVA, KL, KRG, EHR, **EUR 69.900,- exkl.** 20 % MwSt. (statt 87.375,-), Dörfner Werner, +43664 5015039, (ID G 68384992 - 1251152)



L5623890 - 20%

John Deere - 6170R, 2012, 170/125 PS/kW, 10722h, A, K, DLB, FH, FZW, gFVA, KL, EHR, **EUR 44.900,- exkl.** 20 % MwSt. (statt 56.125,-), Sudy Franz, +43664 1308649, (ID G 68383976 - SI55860)



L6362437 - 20%

John Deere - 6920, 2005, 150/111 PS/kW, 166h, A, K, DLB, FH, gFVA, KL, KRG, EHR, **EUR 42.900,- exkl.** 13 % MwSt./Verm. (statt 53.625,-), Barat Tibor, +43664 88839569, (ID V 68387632 - 1251270)



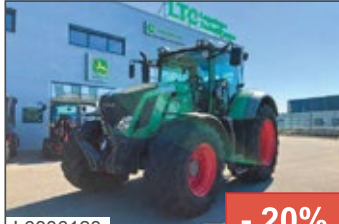
L6003436 - 20%

John Deere - 5820, 2008, 90/67 PS/kW, 166h, A, LS, K, FH, EHR, **EUR 34.900,- exkl.** 20 % MwSt. (statt 43.863,-), Sudy Franz, +43664 1308649, (ID G 68388686 - 68387895)



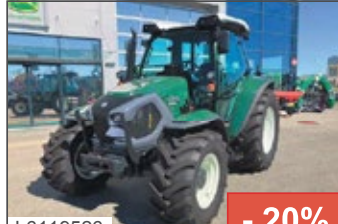
L5159497 - 20%

John Deere - 4066R, 2018, 66/49 PS/kW, 166h, A, K, DLB, FH, FZW, gFVA, KL, EHR, **EUR 39.900,- exkl.** 20 % MwSt. (statt 49.875,-), Gunacker Thomas, +43664 2525910, (ID G 6838776 - 541043/)



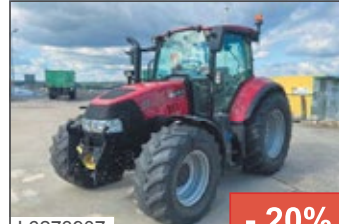
L6386128 - 20%

Fendt - 822 Vario, 2012, 220/162 PS/kW, 6300h, A, K, DLB, FH, gFVA, KL, KRG, EHR, **EUR 74.900,- exkl.** 20 % MwSt. (statt 93.625,-), Stahl Friedrich, +43664 6273322, (ID G 68387810 - 1591126)



L6119526 - 20%

Lindner - Lintrac 75LS, 2023, 75/56 PS/kW, 198h, A, K, KL, EHR, **EUR 54.900,- exkl.** 20 % MwSt. (statt 68.625,-), Stahl Friedrich, +43664 6273322, (ID V 68385878 - 2062989)



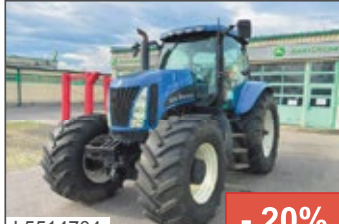
L6273907 - 20%

Case IH - Luxxum 120, 2017, 120/89 PS/kW, 3768h, A, K, DLB, FH, FZW, KL, EHR, **EUR 51.900,- exkl.** 20 % MwSt. (statt 64.875,-), Kurzreiter Erich, +43664 6272782, (ID V 68384067)



L5981758 - 20%

Same - Dorado 3 100, 2012, 95/70 PS/kW, 2406h, A, K, FH, KL, EHR, **EUR 29.900,- exkl.** 20 % MwSt. (statt 37.375,-), Sudy Franz, +43664 1308649, (ID G 68385702 - SZ56162)



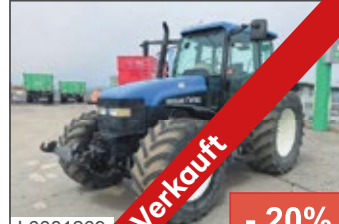
L5514704 - 20%

New Holland - TG 285, 2004, 311/229 PS/kW, 7870h, A, LS, K, DLB, KL, EHR, **EUR 28.900,- exkl.** 20 % MwSt. (statt 36.125,-), Sudy Franz, +43664 1308649, (ID G 68388378 - ST57904)



L6119529 - 20%

New Holland - TD5.85, 2021, 85/63 PS/kW, 650h, A, K, FH, KL, **EUR 39.900,- exkl.** 20 % MwSt. (statt 49.875,-), Stahl Friedrich, +43664 6273322, (ID V 68388070 - 160003/)



L6381269 - 20%

New Holland - TM 150, 2003, 150/111 PS/kW, 6200h, A, LS, K, DLB, FH, FZW, gFVA, KL, EHR, **EUR 37.900,- exkl.** 13 % MwSt./Verm. (statt 41.125,-), Kurzreiter Erich, +43664 6272782, (ID V 68387423 - 68387895)



L6029822 - 20%

New Holland - TL 80, 2007, 80/59 PS/kW, 8839h, A, K, DLB, FH, FL, KRG, **EUR 22.900,- exkl.** 20 % MwSt. (statt 28.625,-), Barat Tibor, +43664 88839569, (ID 68385773)





L4723441

- 20%

Massey Ferguson - MF 6S.155, 2022, 175/129 PS/kW, 1087h, A, K, DLB, FH, gVA, KL, EHR, **EUR 99.990,- exkl. 20 % MwSt. (statt 124.988,-)**, Kurzreiter Erich, +43664 6272782, (ID G 68389399 - 2231795)



L6006683

- 20%

Massey Ferguson - 8S.225 Dyna E-Power EXC, 2021, 238/175 PS/kW, 1571h, A, LS, K, DLB, FH, gVA, KL, EHR, **EUR 94.900,- exkl. 20 % MwSt. (statt 118.625,-)**, Barat Tibor, +43664 88839569, (ID G 68384622 -



L6010413

- 20%

Massey Ferguson - 362, 1997, 62/46 PS/kW, 6500h, A, K, **EUR 16.900,- exkl. 20 % MwSt. (statt 21.125,-)**, Dörfner Werner, +43664 5015039, (ID V 68384096 - 1599387)



L6119541

- 20%

McCormick - CX 75, 2005, 76/56 PS/kW, 6500h, A, K, DLB, FH, FL, FZW, KL, EHR, **EUR 28.900,- exkl. 20 % MwSt. (statt 36.125,-)**, Stahl Friedrich, +43664 6273322, (ID V 68386897 - 2063003)



L6058144

- 20%

Manitou - MLT 1041 145PS, 2021, 145/107 PS/kW, 4866h, WVhy, KL, **EUR 65.900,- exkl. 20 % MwSt. (statt 82.375,-)**, Simon Mario, +43664 5314645, (ID G 68387561 - KE56263)



L6210516

- 20%

Manitou - MLT 1041 145PS, 2021, 145/107 PS/kW, 4505h, WVhy, KL, **EUR 67.900,- exkl. 20 % MwSt. (statt 84.875,-)**, Simon Mario, +43664 5314645, (ID G 68387562 - KE56265)



L5724832

- 20%

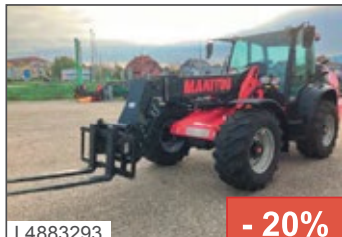
Manitou - MLT 1040-145PS, 2021, 145/107 PS/kW, 4662h, WVhy, KL, **EUR 59.900,- exkl. 20 % MwSt. (statt 74.875,-)**, Simon Mario, +43664 5314645, (ID 68371400)



L5569263

- 20%

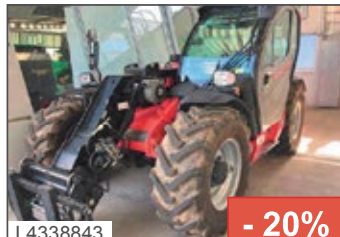
Manitou - MT 932, 2014, 1/1 PS/kW, 5950h, **EUR 33.490,- exkl. 20 % MwSt. (statt 41.863,-)**, Simon Mario, +43664 5314645, (ID G 68388244 - S156448)



L4883293

- 20%

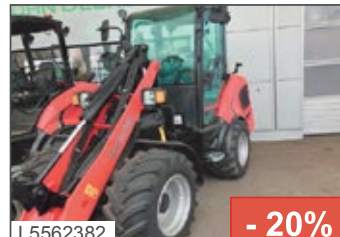
Manitou - MLA533 Teleradlader, 2023, 136/100 PS/kW, 23h, **EUR 99.900,- exkl. 20 % MwSt. (statt 124.875,-)**, Waxenegger Franz, +43664 8124254, (ID 110448)



L4338843

- 20%

Manitou - Teleskoplader MLT 635 Premium, 2023, 136/100 PS/kW, 280h, 4RAD, KL, **EUR 82.900,- exkl. 20 % MwSt. (statt 103.625,-)**, Waxenegger Franz, +43664 8124254, (ID 107599)



L5562382

- 20%

Manitou - Manitou MLA 5-50, 2023, 1/1 PS/kW, 10h, **EUR 41.490,- exkl. 20 % MwSt. (statt 51.863,-)**, Waxenegger Franz, +43664 8124254, (ID 890964)



L5562379

- 20%

Manitou - Manitou MLA 4-50, 2023, 1/1 PS/kW, 19h, **EUR 36.490,- exkl. 20 % MwSt. (statt 45.613,-)**, Waxenegger Franz, +43664 8124254, (ID 890890)



L6069338

- 20%

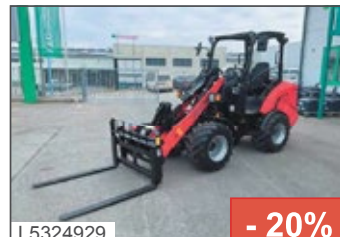
Manitou - Hoflader MLA 4-50, 2023, 1/1 PS/kW, 10h, **EUR 35.690,- exkl. 20 % MwSt. (statt 44.613,-)**, Waxenegger Franz, +43664 8124254, (ID 890778)



L5562373

- 20%

Manitou - Manitou MLT 3-25, 2023, 1/1 PS/kW, 10h, **EUR 30.900,- exkl. 20 % MwSt. (statt 38.625,-)**, Waxenegger Franz, +43664 8124254, (ID 890819)



L5324929

- 20%

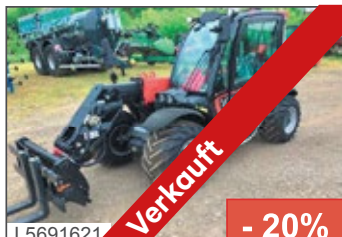
Manitou - MLA 3-25 H, 2023, 1/1 PS/kW, **EUR 31.490,- exkl. 20 % MwSt. (statt 39.363,-)**, Kurzreiter Erich, +43664 6272782, (ID 890853)



L6069347

- 20%

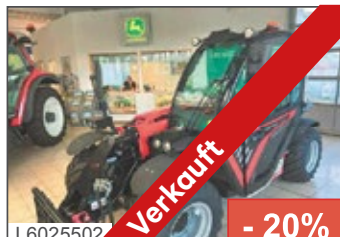
Manitou - Hoflader MLA 2-25, 2023, 1/1 PS/kW, 10h, **EUR 23.290,- exkl. 20 % MwSt. (statt 29.113,-)**, Waxenegger Franz, +43664 8124254, (ID 890123)



L5691621

- 20%

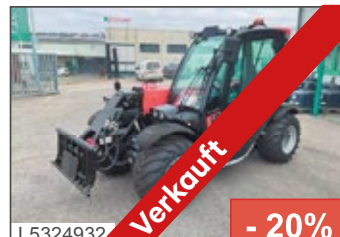
Manitou - ML 415 H Classic, 2023, 35/26 PS/kW, 10h, WVhy, **EUR 43.900,- exkl. 20 % MwSt. (statt 55.000,-)**, Waxenegger Franz, +43664 8124254, (ID 119838)



L6025502

- 20%

Manitou - ML 415 H, 2023, 35/26 PS/kW, 10h, WVhy, **EUR 41.490,- exkl. 20 % MwSt. (statt 51.863,-)**, Waxenegger Franz, +43664 8124254, (ID 16187)



L5324932

- 20%

Manitou - ML 412 H, 2023, 35/26 PS/kW, 10h, WVhy, **EUR 40.490,- exkl. 20 % MwSt. (statt 50.613,-)**, Waxenegger Franz, +43664 8124254, (ID 100023)

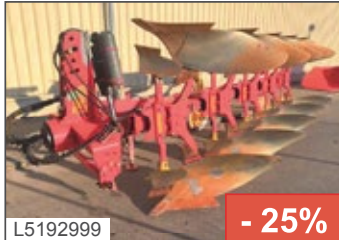


L6090709

- 20%

Manitou - ULM 412 H, 2023, 35/26 PS/kW, 10h, **EUR 37.900,- exkl. 20 % MwSt. (statt 47.375,-)**, Waxenegger Franz, +43664 8124254, (ID 105270)





L5192999 - 25%

Pöttinger - Servo 45 S Plus 5-sch., 2014, EUR 10.900,-- exkl. 20 % MwSt. (statt 14.533,--), Sudy Franz, +43664 1308649, (ID V 68388140 - ST57623)



L5511751 - 25%

Pöttinger - Servo 45 Plus, 2004, EUR 9.200,-- exkl. 20 % MwSt. (statt 13.200,--), Stahl Friedrich, +43664 6273322, (ID G 68388321 - 771)



L5529642 - 25%

Pöttinger - Servo 35/4, 2012, EUR 6.900,-- exkl. 20 % MwSt. (statt 9.200,--), Stahl Friedrich, +43664 6273322, (ID V 68388201)



L5124693 - 25%

Kverneland - LB 100-160 4-sch., 1996, EUR 6.900,-- exkl. 20 % MwSt. (statt 9.200,--), Sudy Franz, +43664 1308649, (ID V 68387741 - GR57664)



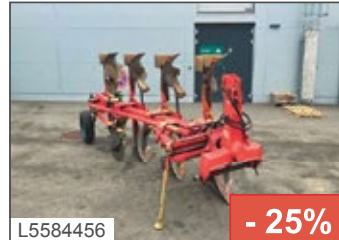
L4883317 - 25%

Vogel&Noot - 4 Schar Pflug, 1997, EUR 3.900,-- exkl. 20 % MwSt. (statt 5.200,--), Stahl Friedrich, +43664 6273322, (ID 68377866)



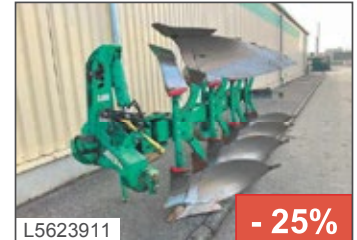
L5667347 - 25%

Vogel&Noot - LM 820, 1998, EUR 2.290,-- exkl. 20 % MwSt. (statt 3.053,--), Kurzreiter Erich, +43664 6272782, (ID V 68388191 - 1411017)



L5584456 - 25%

Vogel&Noot - M 950 Vario, 2000, EUR 4.590,-- exkl. 13% MwSt./Verm. (statt 6.120,--), Stahl Friedrich, +43664 6273322, (ID V 68387849 - 771)



L5623911 - 25%

Regent - Titan 170 SCX 4-sch., 2008, EUR 5.900,-- exkl. 20 % MwSt. (statt 7.867,--), Sudy Franz, +43664 1308649, (ID G 68384463 - ST59110)



L5624028 - 25%

Kongsilde - STX V 600, 2021, BEL, EUR 12.900,-- exkl. 20 % MwSt. (statt 17.200,--), Barat Tibor, +43664 88839569, (ID G 68379506 - 152952/)



L4575336 - 25%

Quivogne - SS08, 2020, EUR 9.900,-- exkl. 20 % MwSt. (statt 13.200,--), Barat Tibor, +43664 88839569, (ID 68378320)



L5569254 - 25%

Kerner - Komet 4.80, 2000, FLG, BEL, STS, EUR 9.900,-- exkl. 20 % MwSt. (statt 13.200,--), Simon Mario, +43664 5314645, (ID G 68376076 - SI56721)



L5624025 - 25%

Regent - Tukan MSG 300, 2015, BEL, EUR 4.900,-- exkl. 20 % MwSt. (statt 6.533,--), Barat Tibor, +43664 88839569, (ID 68386708)



L4590119 - 25%

Kongsilde - VIBRO MASTER 3055 VTM, 2022, EUR 14.900,-- exkl. 20 % MwSt. (statt 19.867,--), Sudy Franz, +43664 1308649, (ID V 68385949 - MO57152)



L4803261 - 25%

Expom - Goliat 6m, 2015, SHB, BEL, STS, EUR 14.900,-- exkl. 20 % MwSt. (statt 19.867,--), Kurzreiter Erich, +43 664 627 27 82, (ID V 68387716 - 229983/)



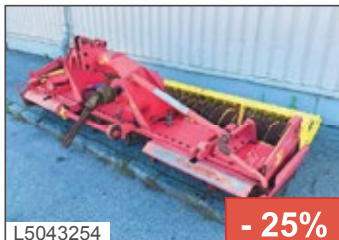
L6343370 - 25%

Ziegler - Disc Master Pro 4501, 2020, SHB, BEL, EUR 12.900,-- exkl. 20 % MwSt. (statt 17.200,--), Kurzreiter Erich, +43664 6272782, (ID G 68386412 - 141891/)



L4837473 - 25%

Sonstige - DOM S 35, 2003, SHB, BEL, STS, EUR 7.900,-- exkl. 20 % MwSt. (statt 10.533,--), Dörfler Werner, +43664 5015039, (ID V 68386406)



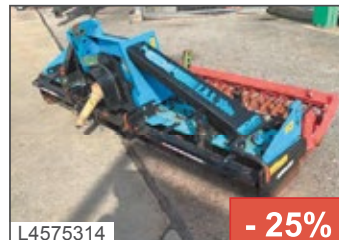
L5043254 - 25%

Pöttinger - Lion 300, 2005, KR, EUR 3.490,-- exkl. 20 % MwSt. (statt 4.653,--), Sudy Franz, +43664 1308649, (ID G 68387974 - MO57439)



L5940830 - 25%

Pegorari - 3000, 1901, KR, EUR 1.590,-- exkl. 20 % MwSt. (statt 2.120,--), Sudy Franz, +43664 1308649, (ID V 68378458 - ST38793)



L4575314 - 25%

Sicma - E.R.S. 3000, 1997, KR, EUR 2.900,-- exkl. 20 % MwSt. (statt 3.867,--), Dörfler Werner, +43664 5015039, (ID V 68376650 - 159935/)



L3902593 - 25%

Sonstige - Egge, 1995, EUR 590,-- exkl. 20 % MwSt. (statt 787,--), Stahl Friedrich, +43664 6273322, (ID 68382267)





L5624058 - 25%

Pötting Terrasem R3 Artis Plus, 2013, EUR 18.900,- exkl. 20 % MwSt. (statt 25.200,-), Simon Mario, +43664 5314645, (ID G 68382825 -



L5624061 - 25%

Lemken - 6 m, 2017, EUR 29.900,- exkl. 20 % MwSt. (statt 39.867,-), Simon Mario, +43664 5314645, (ID G 68386860 - KE59558)



L5795908 - 25%

Lemken - Solitär 8/400 DS, 2012, EUR 19.900,- exkl. 20 % MwSt. (statt 26.533,-), Simon Mario, +43664 5314645, (ID G 68381318 - SI56828)



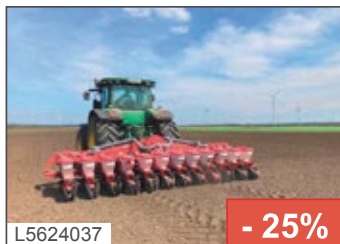
L4883323 - 25%

Lemken - Solitär 9 300-DS 125, 2016, EUR 22.900,- exkl. 20 % MwSt. (statt 30.533,-), Simon Mario, +43664 6273322, (ID G 683879112)



L4766518 - 25%

Kverneland - NGS 301, 1901, EUR 12.900,- exkl. 20 % MwSt. (statt 17.200,-), Sudy Franz, +43664 1308649, (ID G 68384899 - ST56016)



L5624037 - 25%

Kverneland - Optima, 2017, BEL, EUR 8.900,- exkl. 20 % MwSt. (statt 11.867,-), Barat Tibor, +43664 88839569, (ID 68386188)



L5624001 - 25%

Kverneland - Optima NT, 2012, EUR 6.900,- exkl. 20 % MwSt. (statt 9.200,-), Kurzreiter Erich, +43664 6272782, (ID G 68384458 - K223/32)



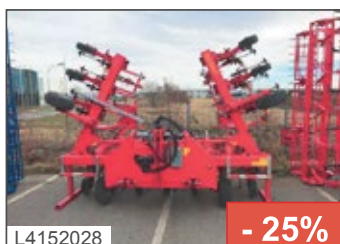
L5623920 - 25%

Monosem - NG, 1980, BEL, EUR 2.490,- exkl. 20 % MwSt. (statt 3.320,-), Sudy Franz, +43664 1308649, (ID V 68381091 - GR57535)



L4269268 - 25%

Einböck - Chopstar ERS 12 Reihig, 2019, EUR 29.900,- exkl. 20 % MwSt. (statt 39.867,-), Simon Mario, +43664 5314645, (ID G 68378373 - SI56842)



L4152028 - 25%

Einböck - Chopstar ERS 12-reihig Hackgerät, 2015, EUR 21.900,- exkl. 20 % MwSt. (statt 29.200,-), Barat Tibor, +43664 88839569, (ID 68384056)



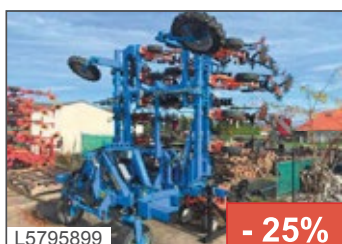
L5260970 - 25%

Einböck - Hackgerät CHOPSTAR 5-90 EMS 6 Reihig + ROW-GUARD, 2015, EUR 22.900,- exkl. 20 % MwSt. (statt 30.533,-), Stahl Friedrich, +43664 6273322, (ID V 68383038 - 714)



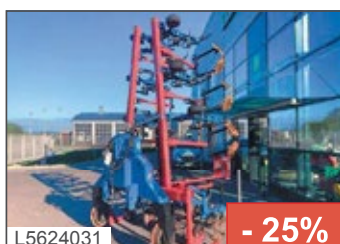
L5623914 - 25%

Einböck - Chopstar EMS 7 Reihig, 2019, EUR 12.900,- exkl. 20 % MwSt. (statt 17.200,-), Sudy Franz, +43664 1308649, (ID G 68385869 - SI56234)



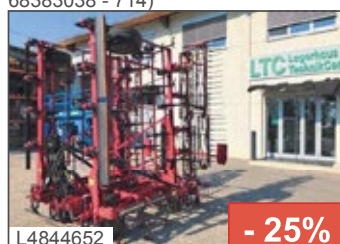
L5795899 - 25%

Schmotzer - Hackgerät 18 x 50, 2022, EUR 54.900,- exkl. 20 % MwSt. (statt 73.200,-), Szendi Franz, +43664 78096679, (ID G 68384187 - SZ56996)



L5624031 - 25%

Hatzenbichler - Hackgerät 9r, 2016, EUR 16.900,- exkl. 20 % MwSt. (statt 22.533,-), Barat Tibor, +43664 88839569, (ID 68378546)



L4844652 - 25%

Kongsilde - Vibromaster 3065, 2019, EUR 14.900,- exkl. 20 % MwSt. (statt 19.867,-), Barat Tibor, +43664 88839569, (ID G 68384987 - 161128/)



L4300942 - 25%

Hatzenbichler - Rollsternhacke 12x50, 2020, EUR 17.900,- exkl. 20 % MwSt. (statt 23.867,-), Barat Tibor, +43664 88839569, (ID 68386083)



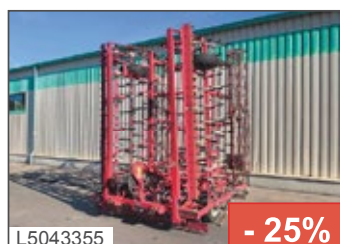
L6358535 - 25%

Sonstige - TINECARE V 12200, 2023, EUR 22.900,- exkl. 20 % MwSt. (statt 30.533,-), Barat Tibor, +43664 88839569, (ID G 68384211)



L4288473 - 25%

APV - 1200 M1 Variostriegel, 2019, EUR 21.900,- exkl. 20 % MwSt. (statt 29.200,-), Simon Mario, +43664 5314645, (ID G 68381463)



L5043355 - 25%

Kongsilde - VM 2585 SQ, 2011, EUR 10.900,- exkl. 20 % MwSt. (statt 14.533,-), Sudy Franz, +43664 1308649, (ID G 68384894 - MO57460)



L5569257 - 25%

CFS - 6,6, 2019, EUR 11.900,- exkl. 20 % MwSt. (statt 15.867,-), Simon Mario, +43664 5314645, (ID G 68384733 - SI57095)





John Deere - 960, 2013, **EUR 19.900,- exkl. 20 % MwSt. (statt 26.533,-)**, Stahl Friedrich, +43664 6273322, (ID V 68385637)



John Deere - 592C, 2003, NB, RNH, SHV, **EUR 7.900,- exkl. 20 % MwSt. (statt 10.533,-)**, Dörfler Werner, +43664 5015039, (ID G 68384781 - 234044/)



Fendt - Slicer 3060 FPKC, 2019, SHB, AFB, **EUR 6.900,- exkl. 20 % MwSt. (statt 9.200,-)**, Stahl Friedrich, +43664 6273322, (ID G 68389611)



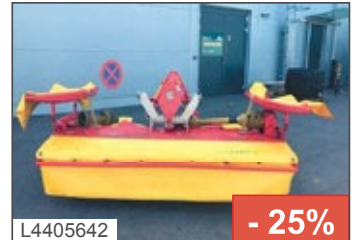
Pöttinger - Novacat 301 Classic, 2012, SHB, SHV, **EUR 6.900,- exkl. 20 % MwSt. (statt 9.200,-)**, Barth Stefan, +43664 6275697, (ID V-68386976)



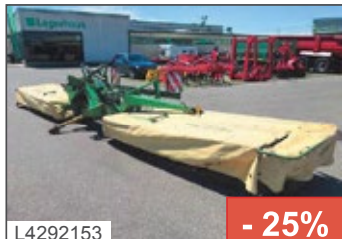
Pöttinger - EUROCAT 271 Classic, 2017, TR, **EUR 5.490,- exkl. 20 % MwSt. (statt 7.320,-)**, Stahl Friedrich, +43664 6273322, (ID V 68386332)



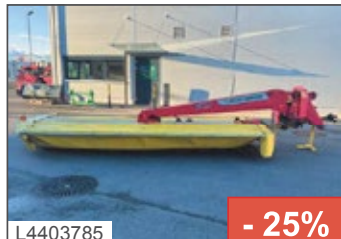
Pöttinger - Euro CAT 301, 2008, TR, SHV, **EUR 4.490,- exkl. 20 % MwSt. (statt 5.987,-)**, Dörfler Werner, +43664 5015039, (ID V 68384996 - 1591030)



Pöttinger - Novacat 306 F Classic, 2011, SHB, SHV, **EUR 4.900,- exkl. 13 % MwSt./Verm. (statt 6.533,-)**, Stahl Friedrich, +43664 6273322, (ID 68384855)



Krone - Easy Cut 9000, 2005, SHB, BEL, **EUR 9.900,- exkl. 13 % MwSt./Verm. (statt 13.200,-)**, Sudy Franz, +43664 1308649, (ID V 68385050 - KE56206)



Pöttinger - Novacat 442, 2013, BEL, **EUR 7.900,- exkl. 20 % MwSt. (statt 10.533,-)**, Stahl Friedrich, +43664 6273322, (ID V 68381640 - 754)



Kuhn - GMD 3510 FF, 2015, SHB, SHV, **EUR 5.900,- exkl. 20 % MwSt. (statt 7.867,-)**, Sudy Franz, +43664 1308649, (ID G 68383948 - KE56116)



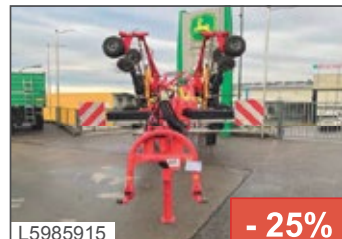
Pöttinger - Hit 54N, 1999, **EUR 2.490,- exkl. 20 % MwSt. (statt 3.320,-)**, Stahl Friedrich, +43664 6273322, (ID 68386444)



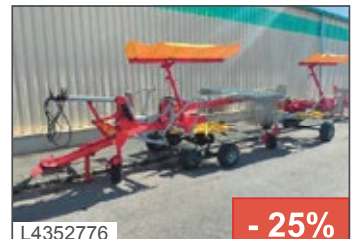
Kuhn - GF 5001, 1995, **EUR 2.900,- exkl. 20 % MwSt. (statt 3.867,-)**, Sudy Franz, +43664 1308649, (ID V 68384389 - KE56124)



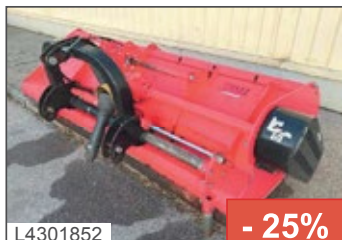
Kuhn - GF 4201 HM, 1996, **EUR 2.290,- exkl. 20 % MwSt. (statt 3.053,-)**, Stahl Friedrich, +43664 6273322, (ID 68386348)



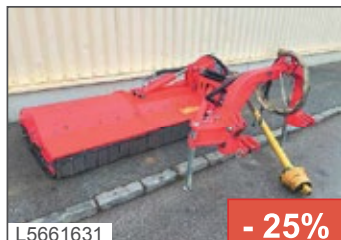
Pöttinger - Top 852 C s-line, 2012, MIT, BEL, TDA, **EUR 16.900,- exkl. 20 % MwSt. (statt 22.533,-)**, Kurzreiter Erich, +43664 6272782, (ID V 68385539 - 234052/)



Pöttinger - Top 632 A, 2022, STN, BEL, TDA, **EUR 18.900,- exkl. 20 % MwSt. (statt 25.200,-)**, Sudy Franz, +43664 1308649, (ID V 68384837 - P156091)



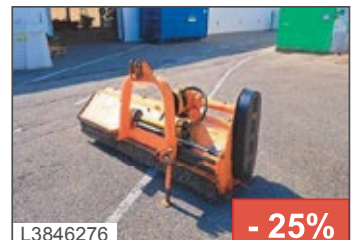
Zilli - Trincia 280, 2013, **EUR 2.590,- exkl. 20 % MwSt. (statt 3.453,-)**, Sudy Franz, +43664 1308649, (ID V 68383497 - MO57424)



Tehnos - MB 220LW, 2017, **EUR 3.900,- exkl. 20 % MwSt. (statt 5.200,-)**, Sudy Franz, +43664 1308649, (ID G 68386435 - KE56224)



Maschio - Bisonte 280 Front-Heck, 2019, **EUR 3.490,- exkl. 20 % MwSt. (statt 4.653,-)**, Stahl Friedrich, +43664 6273322, (ID V 68386034 - 734)



Berti - Dual 285, 2011, **EUR 3.590,- exkl. 20 % MwSt. (statt 4.787,-)**, Stahl Friedrich, +43664 6273322, (ID V 68379683 - 716)





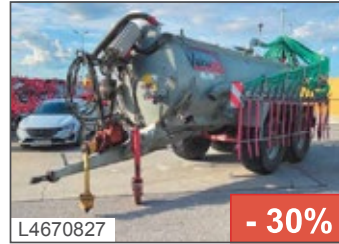
L5623923 - 30%

Brantner - 20051/2XL, 2006, EUR 23.900,- exkl. 20 % MwSt. (statt 34.143,-), Sudy Franz, +43664 1308649, (ID G 68387081 - PI55757)



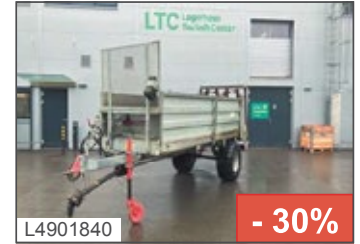
L4883227 - 30%

Kässbohrer - VKD 12, 1990, EUR 1.990,- exkl. 20 % MwSt. (statt 2.843,-), Sudy Franz, +43664 1308649, (ID G 68376411)



L4670827 - 30%

Vakutec - VA10000, 2003, EUR 21.900,- exkl. 20 % MwSt. (statt 31.286,-), Dörfler Werner, +43 664 501 50 39, (ID V 68380359 - 232459/)



L4901840 - 30%

Gruber - SM 650, 2015, EUR 12.900,- exkl. 20 % MwSt. (statt 18.429,-), Stahl Friedrich, +43664 6273322, (ID V-68384686)



L6273700 - 30%

Rauch - Axera H/EMC, 2007, TEL, ADPS, GSE, EUR 5.490,- exkl. 20 % MwSt. (statt 7.843,-), Dörfler Werner, +43664 5015039, (ID G 68386533 - 167461/)



L5494275 - 30%

Rauch - MDS 19.1, 2011, TEL, GSE, EUR 3.490,- exkl. 20 % MwSt. (statt 4.986,-), Sudy Franz, +43664 1308649, (ID V 68385830 - SI56243)



L5043358 - 30%

Amazone - ZA-M ultra 3000, 2007, 1h, TEL, GSE, EUR 7.900,- exkl. 20 % MwSt. (statt 11.286,-), Sudy Franz, +43664 1308649, (ID G 68384904 - MO7448)



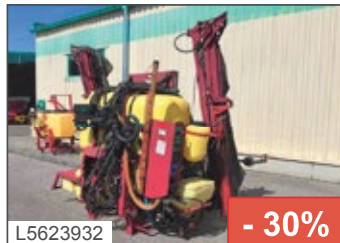
L5623935 - 30%

Amazon - LAM MAXI S, 2002, 1h, TEL, GSE, EUR 2.490,- exkl. 20 % MwSt. (statt 3.557,-), Sudy Franz, +43664 1308649, (ID G 68376062 - 167461/)



L6285990 - 30%

Hardi - Commander, 1992, 1h, EUR 4.490,- exkl. 20 % MwSt. (statt 6.414,-), Dörfler Werner, +43664 5015039, (ID G 68386295 - 1251230)



L5623932 - 30%

Hardi - Master, 2003, 1h, BC, EUR 6.900,- exkl. 20 % MwSt. (statt 9.857,-), Sudy Franz, +43664 1308649, (ID V 68385762 - SI56238)



L6285996 - 30%

Jessernigg - NG JP 1400/15, 2019, 1h, EUR 12.490,- exkl. 20 % MwSt. (statt 17.843,-), Kurzreiter Erich, +43664 6272782, (ID G 68385573 - 1251212)



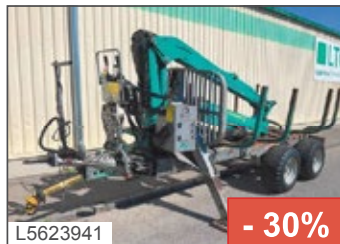
L4409968 - 30%

Jessernigg - 660/12, 1995, 1h, EUR 390,- exkl. 20 % MwSt. (statt 557,-), Dörfler Werner, +43664 5015039, (ID V 68378869 - 1541540)



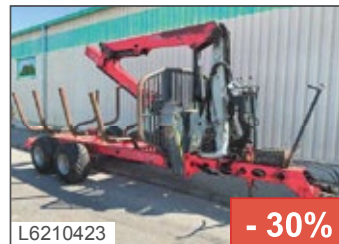
L5260982 - 30%

Sonstige - Rückewagen RW 10 Alpin mit Kran FK7000L, 2021, EUR 33.900,- exkl. 20 % MwSt. (statt 48.429,-), Stahl Friedrich, +43664 6273322, (ID V 68387784 - 714)



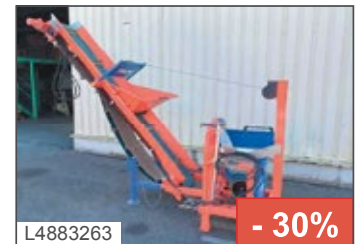
L5623941 - 30%

Pfanzelt - S 9 / LK4267, 2021, EUR 17.900,- exkl. 20 % MwSt. (statt 25.571,-), Sudy Franz, +43664 1308649, (ID G 68384138)



L6210423 - 30%

Stepa - FHL 9 AK - FKL 4377, 2011, EUR 14.900,- exkl. 20 % MwSt. (statt 21.286,-), Sudy Franz, +43664 1308649, (ID V/68387190 - ST57602)



L4883263 - 30%

Balfor - SC 700 CNT 5/400 PI, 2019, 1/1 PS/kW, EUR 2.900,- exkl. 20 % MwSt. (statt 4.143,-), Sudy Franz, +43664 1308649, (ID G 68377721 - WI)



L5791356 - 30%

Holzknacker - HS 650, 2023, ehBT, EUR 8.429,- exkl. 20 % MwSt. (statt 12.143,-), Sudy Franz, +43664 1308649, (ID G 68389630 - GR 5811)



L4883215 - 30%

Igland - 2006, EUR 990,- exkl. 20 % MwSt. (statt 1.414,-), Sudy Franz, +43664 1308649, (ID V 6838501 - ST58723)



L4883383 - 30%

Sonstige - KL 2500T, 2019, EUR 2.490,- exkl. 20 % MwSt. (statt 3.557,-), Barat Tibor, +43664 88839569, (ID 68378447)



L5087064 - 30%

Sonstige - Bündelgerät BUH 10, 2018, EUR 1.590,- exkl. 20 % MwSt. (statt 2.271,-), Stahl Friedrich, +43664 6273322, (ID V 68388193 - 714)